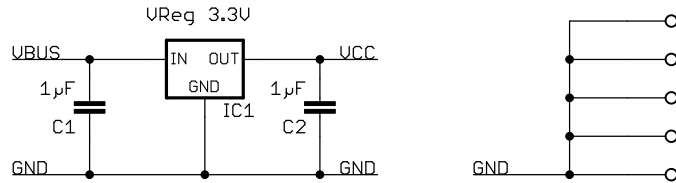
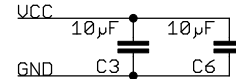
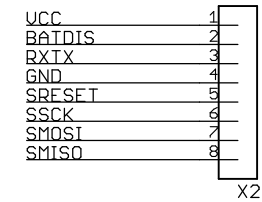


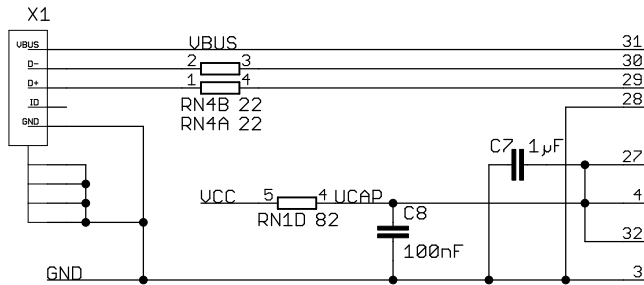
**Power supply**



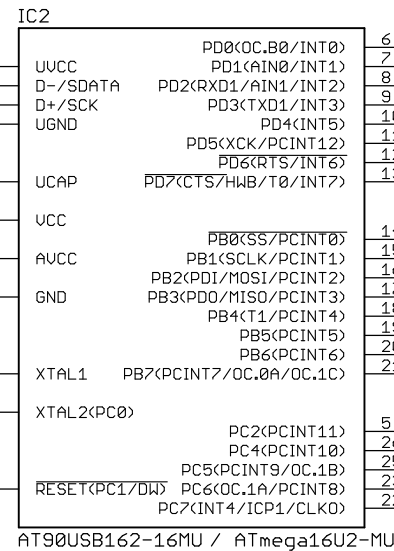
**BOB3 programming interface**



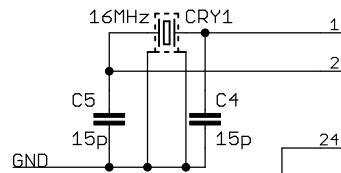
**USB interface**



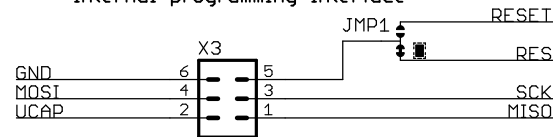
**Microcontroller**



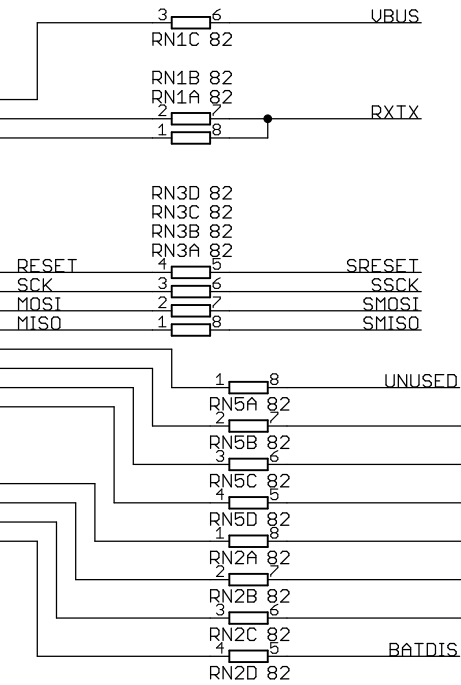
**Clock generation**



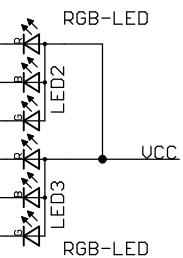
**Internal programming interface**



**JMP1:**  
 default: X3 program target is IC2  
 alt: use X3 as standard 6-pin AVR-ISP-programmer



**Diagnostic LEDs**



TITLE: ProgBob

<http://www.progbob.org>

REV:  
V1.3

Date: 23.02.18 20:26

Sheet: 1/1